

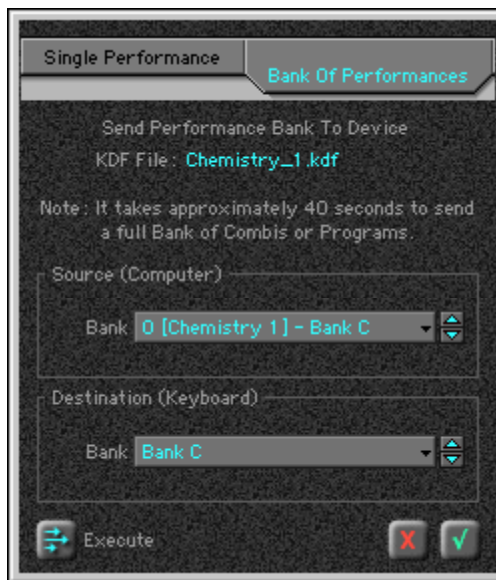
How to send Combis and GEs to the Korg Karma Workstation from KARMA MW Software – rev 3/18/2008

You can send the PCG and KGE data with Sysex, instead of putting it on a floppy – you may not have access to a floppy drive, for example.

Sending PCG Data (Combis) to the Karma:

- 1) With KARMA MW running, from the “SysEx” Menu, choose “Send Performances...” Select the “Bank Of Performances” tab.
- 2) Choose which bank you want to load the Combis into, i.e. Bank C, D or F. For example, switch the source to “[Chemistry 1] – C Bank” and the Destination to “Bank C”.
- 3) Click the “OK” button (green checkmark) to send the bank to the Karma and close the dialog. You can also use the Execute button to keep the dialog open, so that you can send another bank when finished.

To send into a different Combi Bank than C, D or F, first you must change the Bank numbering inside the Performance Bank (in the KARMA Software).



- 1) For example, double-click the “[Chemistry X] - C Bank” row in the KDF Window, which will open the Performance Bank Display.
- 2) Change the “Bank Type” menu in the upper right corner to the desired bank (for example, Combi E) and answer “OK” to the warning dialog asking you if you want to renumber the bank.
- 3) Then re-open the “Send Performances...” dialog and send the renumbered bank to the destination bank that matches what you changed it to (i.e. Combi E).

Sending KGE Data (GEs) to the Karma:

- 1) With KARMA MW running, from the “SysEx” Menu, choose “Send GEs...” Select the “Bank Of GEs” tab.
- 2) Choose which bank you want to load the GEs into, i.e. Bank C, D or F. For example, switch the source to “B” and the Destination to “B”.
- 3) Click the “Execute” button (green arrows) to send the bank to the Karma (leaving it open to send another when finished).
- 4) Proceed with each bank you want to send, then click the red “X” after finished with all banks.

