



Importing your own PCG Data into a KDF File

Revision 19-Dec-2008 © by Stephen Kay

In this tutorial, we'll examine how to import PCG Data (banks of Combis and Programs) that you may have created in your OASYS, or that third party developers have provided, so that you can work with them in KARMA Oasys.

One key concept to understand is: if the Combis and Programs in the PCG use any of the Factory GEs, you will need those banks of GEs (and any Template Banks that they use) in the KDF file as well. If you start with a "new" KDF File, it will not have the factory GE or Template ROM Banks in it. You could copy them one bank at a time from the Preload KDF file, but a better way to proceed is to always start with the Preload KDF file, and modify it to include your PCG Data, optionally saving it as a new KDF file. This way, all of the factory GE Banks will already be in it.

The images shown here are from the Mac OS X version, but should be virtually identical on Windows.

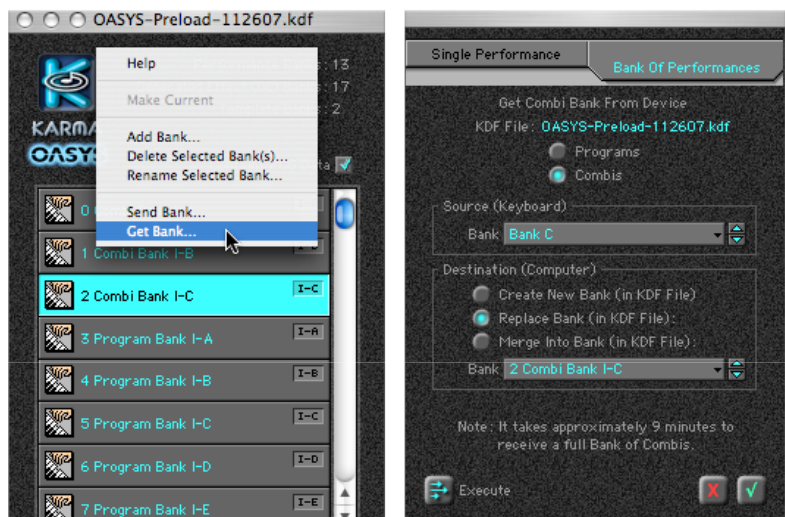
Let's assume you have written some custom Combis in Bank U-B (User B). You'll need to add a user Bank of Combis to the Preload KDF, import your data into it, and then save the KDF (optionally saving it as a new KDF, preserving the state of the Preload KDF, which is not a bad idea).

The easiest way to do this, when adding a bank that doesn't exist in the KDF already, is to get the bank of Performances from the OASYS and have it create a new bank in the KDF file at the same time.

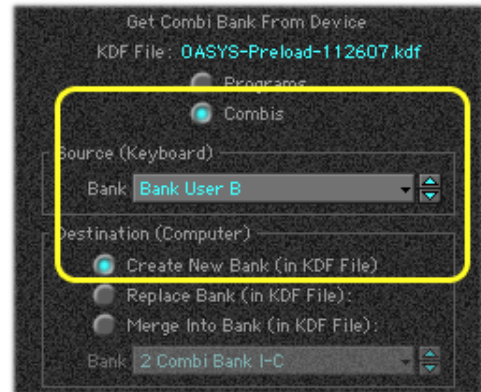
A. Using the "Create New Bank" Option

1. First, make sure you have the Preload KDF File open and current. (The name may differ slightly from what is shown in these diagrams, but it's the KDF included with the KO installation, containing the words **OASYS-Preload-xxx.kdf**. If it is not open, you can locate it on your hard drive and double-click it, or use the File Menu > Open command to locate it and load it.)

In the KDF window, select **Combi Bank I-C** as shown, click on the Menu Button (the KO Logo), and select "Get Bank..." The Get Performances dialog opens up, with the Bank Tab pre-selected as shown.



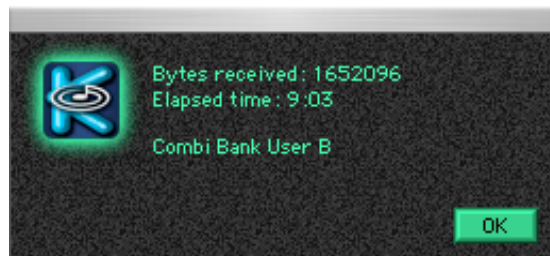
- At the top is shown the name of the KDF File that will receive the data (if you have more than one open, you will need to make sure you are selecting this operation from the Menu Button of the KDF file that you want the data to go to). You have a choice of Programs or Combis (which create different types of Performance Banks in KO). Make sure the Combis option is selected.
- Set the Source menu to **Bank User B**, and the Destination options to "Create New Bank (in KDF File)". This will cause the creation of a new bank into which the data will be stored as it is received.
- Press the OK button (green checkmark), and KO will start requesting Combis from the User-B Bank. (You could also use the Execute button, if you wanted to keep the dialog open for requesting another bank after this one finishes.)



You will see a new Bank appear in the KDF File, inserted after the bank that you selected in step 2.

The entire procedure takes about 9 minutes for a bank of Combis, and 4 minutes for a bank of Programs. Unfortunately, it's the speed of MIDI that's the problem, not anything else. So now is a good time to grab a cup of coffee. Also note that in that case, you can put KARMA Oasys in the background and it will continue processing the SysEx, while you check your email or some other work. The Combis are actually being received one by one, so you can cancel at any time if you wish, but you will only have a partially received bank as a result.

- When the procedure is completed, an alert will sound and a dialog will be shown similar to this:



- You will see your new bank highlighted in the KDF file. Press Enter (or double-click it) to open the Bank Display Window, where you will see the names of all the Combis you requested.

At this point, you can select Combis in the Bank Display Window, and have them selected in the OASYS as well. All of the PCG data for that bank has been imported, and the KARMA parameters have been converted to KO format and stored in the Performances. (See the tutorial "Understanding the KDF File" for more information on the internal structure of the KDF File and how it relates to PCG, Programs, and Combis.)

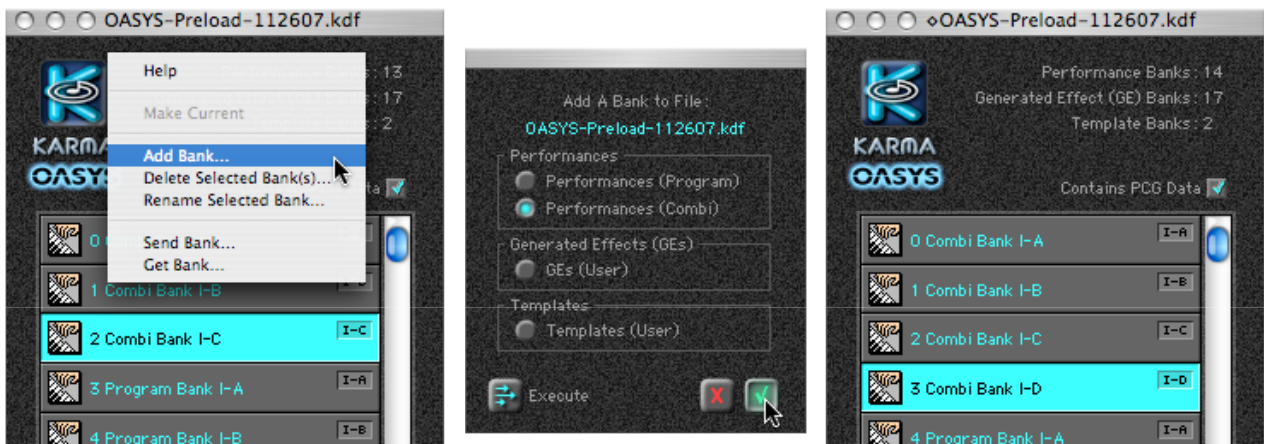
- Now, we'll save the KDF as a new file, in order to preserve the original Preload file (you'll notice it has a diamond or an asterisk next to the name in the title bar, indicating it is currently edited). From the File Menu, choose "Save As...", give the file a name such as **My Performances.kdf**, and press OK. The name of the KDF changes, and your data has been saved as a new KDF File. Now that you have a new KDF File, any further edits can be saved into it using the File Menu > Save command ([cmd+S \[mac\]](#), [ctrl+S \[win\]](#)).

B. Using the "Replace Bank" Option

An alternate method is to add the bank first, then get the data and replace it. You may also use this method to update the contents of a bank that already exists, if you have done some editing to it inside the OASYS.

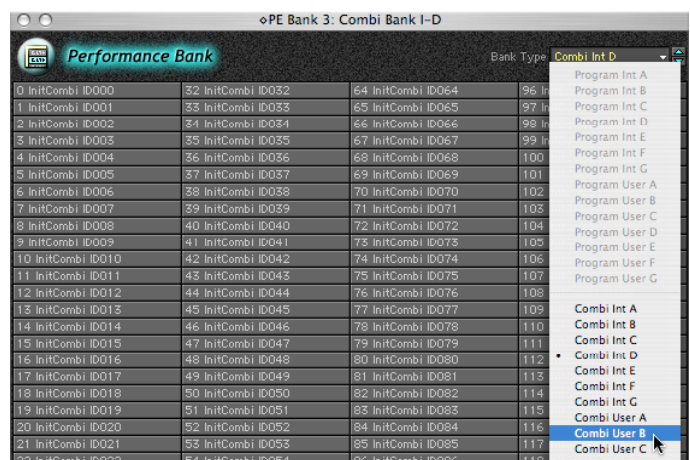
1. First, we need to add a bank to the Preload KDF File. (The name may differ slightly from what is shown in these diagrams, but it is the KDF included with the KO installation, containing the words **OASYS-Preload-xxx.kdf**. If it is not open, you can locate it and double-click it, or use the File Menu > Open command to locate it and load it.)

In the KDF window, select **Combi Bank I-C** as shown below, click on the Menu Button (the KO Logo), and select "Add Bank..." In the resulting dialog, select Performances (Combi), and click on the green checkmark (OK). A single new Combi Bank is inserted after the highlighted bank, giving us Combi Bank I-D.

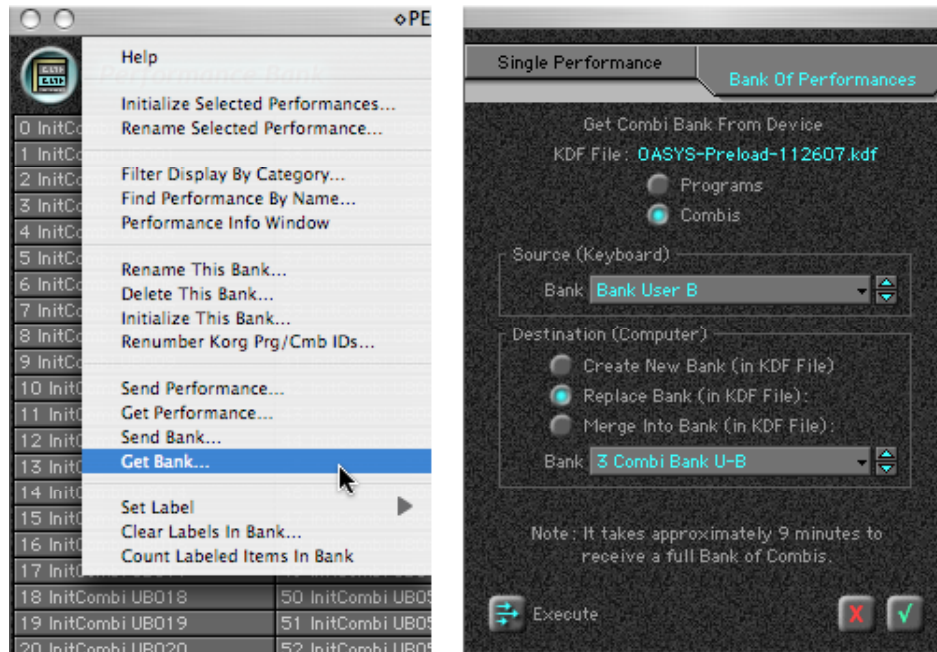


(KO will automatically add a bank of whatever type is not occupied already, so since we have Combi Banks I-A, I-B, and I-C, the next available type is Bank I-D. But the order of Performance Banks in the KDF Window is not fixed, they can be in any order, so if you didn't select Bank I-C first, the new bank would end up at the end of the list.)

2. However, for the purposes of this tutorial, we want to use Combi Bank User-B. Double-click the new Bank I-D in the KDF File (or simply press Enter if it's already selected) to open the Bank Display Window. From the Bank Type popup menu in the upper right corner, select **Combi User B**, and answer OK to the warning about changing all of the bank references. The name of the bank and the Initialized Combis inside it automatically change to reflect the new Bank Type.



- Now, we are going to receive **Combi Bank U-B** from the OASYS via SysEx, replacing this initialized bank. From the Performance Bank Display's Menu Button, choose "Get Bank..." The Get Performances dialog comes up, with the bank tab pre-selected.



- As shown above, make sure the options are set correctly (they should be by default): Source **Bank U-B**, Destination **3 Combi Bank U-B**, and "Replace Bank" selected.
- Press the OK button (green checkmark), and KO will start requesting Combis from the User-B Bank. (You could also use the Execute button, if you wanted to keep the dialog open for requesting another bank after this one finishes.)

The entire procedure takes about 9 minutes for a bank of Combis, and 4 minutes for a bank of Programs. Unfortunately, it's the speed of MIDI that's the problem, not anything else. So now is a good time to grab a cup of coffee. Also note that in that case, you can put KARMA M3 in the background and it will continue processing the SysEx, while you check your email or some other work. The Combis are actually being received one by one, so you can cancel at any time if you wish, but you will only have a partially received bank as a result.

- When the procedure is completed, an alert will sound and a dialog will be shown similar to this:

You will see all the names of your imported Combis or Programs displayed in the Bank Display Window.



At this point, you can select Combis in the Bank Display Window, and have them selected in the OASYS as well. All of the PCG data for that bank has been imported, and the KARMA parameters have been converted to KO format and stored in the Performances. (See the tutorial "Understanding the KDF File" for more information on the internal structure of the KDF File and how it relates to PCG, Programs, and Combis. Also see the tutorial "Editing and Merging a Combi" to gain an important understanding of the other option in the Performance Receive dialog, "Merge").

7. Now, we'll save the KDF as a new file, in order to preserve the original Preload file (you'll notice it has a diamond or an asterisk next to the name in the title bar, indicating it is currently edited). From the File Menu, choose "Save As...", give the file a name such as **My Performances.kdf**, and press OK. The name of the KDF changes, and your data has been saved as a new KDF File. Now that you have a new KDF File, any further edits can be saved into it using the File Menu > Save command ([cmd+S \[mac\]](#), [ctrl+S \[win\]](#)).