



How to "Mirror" the M3 Control Surface and KARMA M3 Software

Revision 12-Nov-2008 © by Stephen Kay

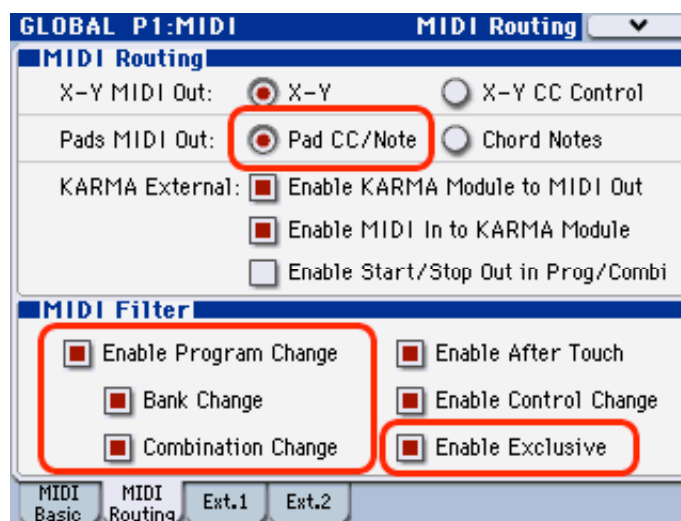
This brief tutorial describes the steps necessary to make it so the M3's Control Surface and Karma M3's Real-Time Controls Window "mirror" each other, and stay synchronized when making changes on either end.

When this is properly configured, you can:

- Select a Program or Combi in the M3, have KM3 switch to the corresponding Performance (instead of just the other way around.)
- Perform edits in KM3's RTC Window, and have it reflected to the M3 Control Surface.
- Use the M3's Control Surface to control the sliders and switches in KM3's RT Controls Window.
- Press the Pads on the M3 and have them trigger the Pads (and stored chords) in KM3, and more.

In the M3:

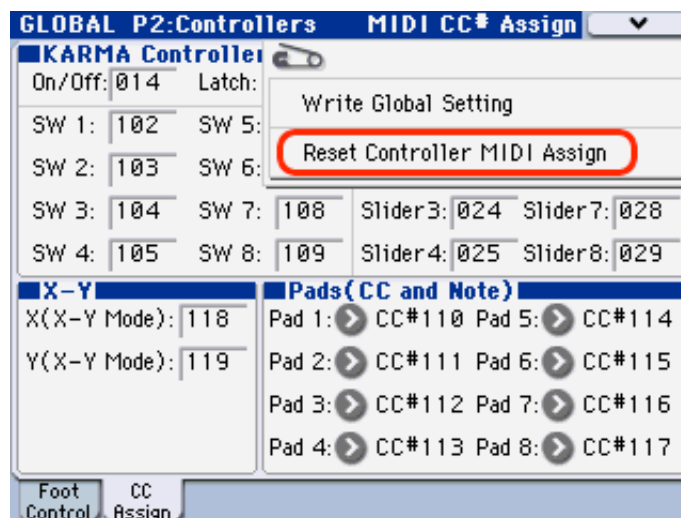
1. Set Global 1-2 MIDI > MIDI Routing > Pads MIDI Out = Pad CC/Note.
2. If you wish to be able to select Performances in the KM3 software by selecting programs and combis in the M3, you must have Enable Program Change, Bank Change and Combination Change checked.
3. Enable Exclusive should already be checked or the software will not be able to locate the M3.



4. Set Global 2-2 Controller > CC Assign, Menu Button > Reset Controller MIDI Assign = CC Default, which will apply the settings shown to the right.

This sets up the control surface (in KARMA Mode) to have a different CC# for each slider and switch.

5. You may wish to use the Menu Button > Write Global Setting to have these settings remembered.



In the KM3 Software:

1. Set Preferences (Mac: KARMA M3 Menu, Win: File Menu) > RT Controls = Default Settings (you may click Default to restore them). As you can see, this basically sets up the CC settings to correspond to the M3 Controllers Page we just set up.
2. Set Transmit and Receive menus at the bottom to the Port and Global MIDI Channel of your M3, and check both of them on.
3. Check the "Program/Combi change selects Performance (front panel)" option, if you want to use this feature.* (The other option should be selected only if you are using an external controller to control the M3, and you are selecting patches on the M3 from the external controller.)



Now, when you move sliders and switches in KM3's window, they should change on the M3, and vice versa. When you change programs or Combis in the M3, it will select the corresponding Performance in the KDF file. Pressing pads on the M3 will press the corresponding Chord Trigger button, causing it to play the notes stored in the application. - complete two-way synchronization. (Note that the Module Control switch also syncs - use F12 on your Computer keyboard or change the settings in KM3's RT Controls Window, or press the Module Control button on the M3, they should mirror each other. This is done with SysEx, since there is no dedicated CC to assign to it. And the Pad Mode switch on the M3 Control Surface also syncs with the Velocity Mode setting in the RT Controls and Chord Trigger Editors, also through SysEx.)

* The reason there are Preference settings that controls whether this is active is because there may be situations where you don't want it to happen or it might cause some problems.

Note: if you select a bank that has no corresponding bank in the KDF file, a warning dialog will tell you about it. You can tell the dialog to not show itself anymore during the current session.